

Advanced Electronic Signs

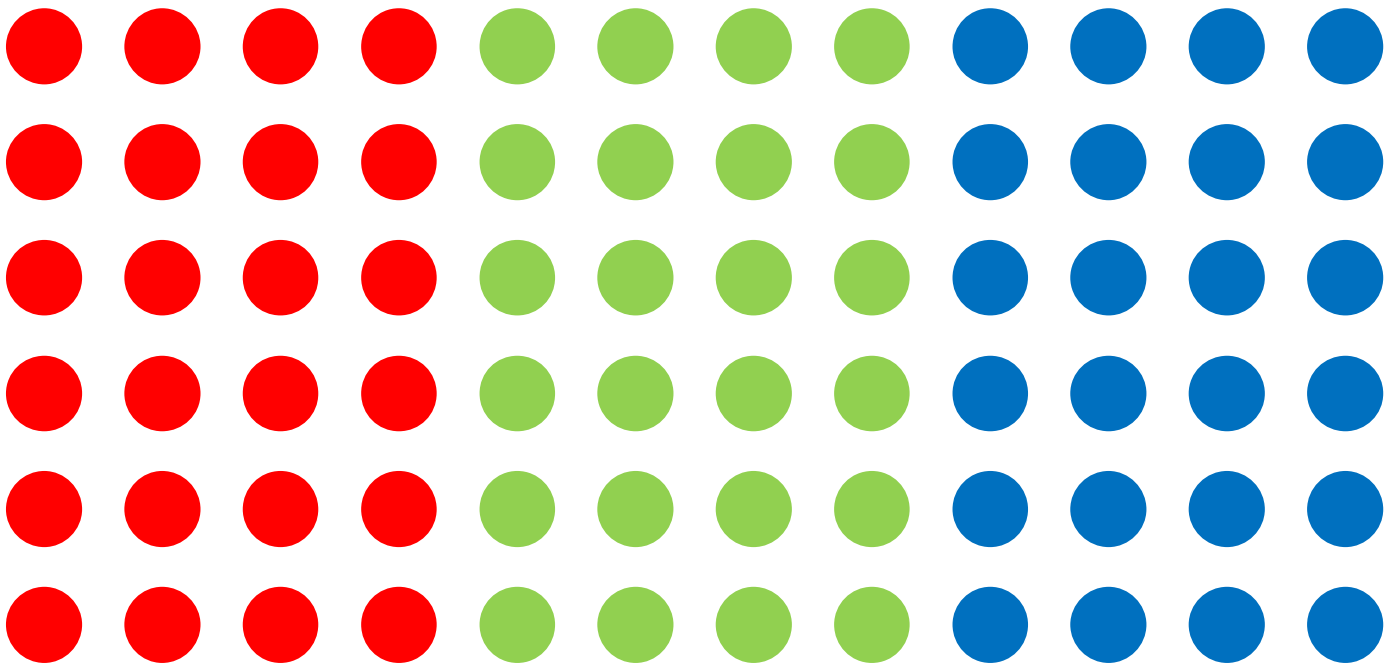


Table of Contents

Software Setup.....	3
Connectionusing USBSerial Cable	5
Connectionusing Bluetooth	8
Connection using Modem	8
Connection using Networking	11
How to Input Text	13
How to Input an Image	16
How to Make a Scale Image Scenario	17
How to Set Region	17
How to Input Time, Date & Temp	18
How to Input Count Down	18
How to Input Video.....	19
How to use Day-Counter (Non-disaster)	20
How to Make a Schedule	21
How to Send File to Sign.....	22

Software setup

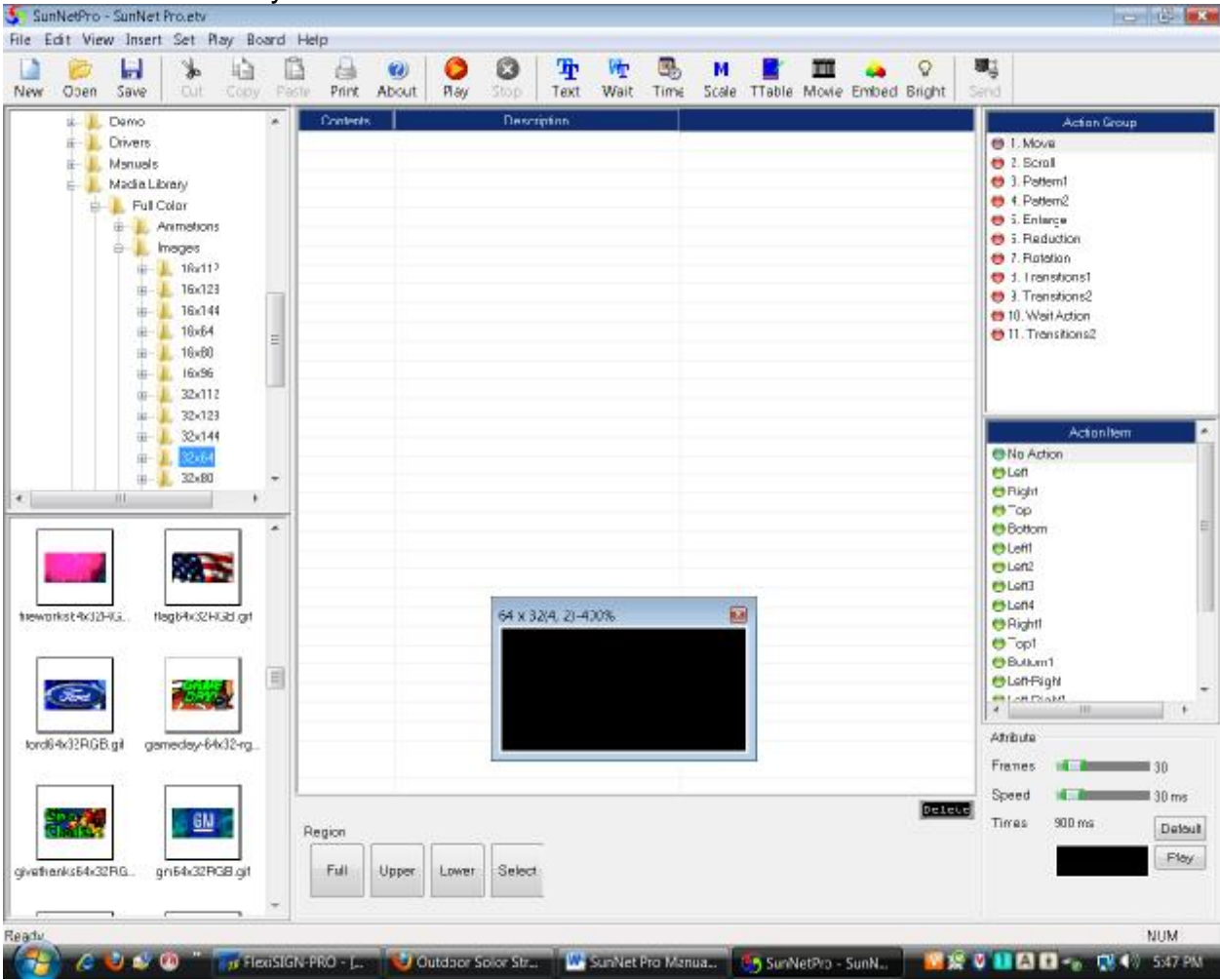
Follow the steps below to set up your SunNet Pro Software:

1. Insert CD and double click on software folder and install SunNet Pro.



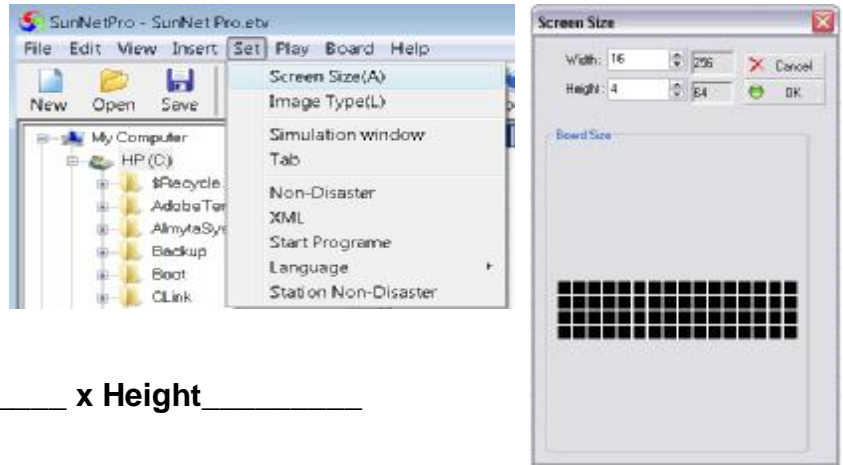
2. Double click SunNetPro icon to start program.

This is what your main screen should look like:



Once you've installed the program follow these steps to complete the set-up...

3. Setup Screen size



Your Screen Size is>>>>Width_____ x Height_____

4. Setup Image Type

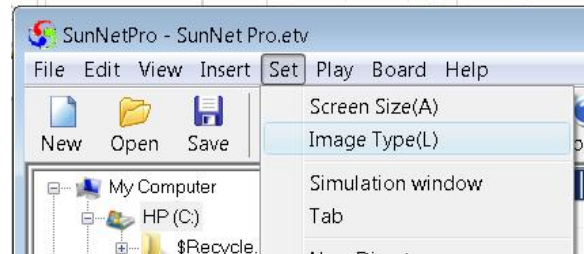
Your Image Type is>>>>_____

For Full Color Choose (Full Color 24 Bit)

For Three Color Choose (R.G.Y)

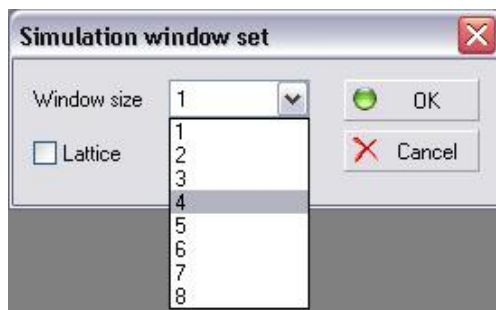
For OSS (Outdoor Single Color Static) Choose (R.G. 256 Color)

For OST (Outdoor Three Color Static) Choose (R.G. 256 Color)

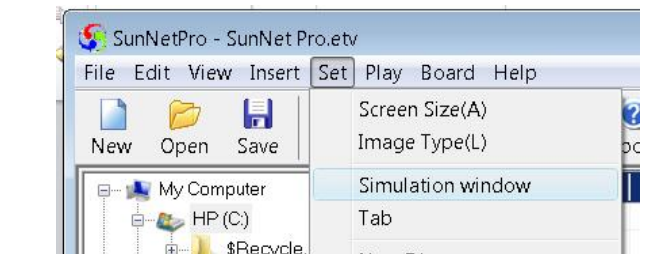


5. Setup Simulation window

Set-up f number **3** and **4** vary depending on your screen



6.



olution.

To save your settings you must **close the program** and restart again.

USB Serial Cable Setup

To connect to your display(s) using a serial connection, simply plug directly into your PC serial connection port which can be found on most, if not all, newer computers.

To use USB you need “USB to serial cable”



To be USB compatible, the correct driver must be installed during manufacturing. Insert the CD and USB to computer; next install Driver software from CD. Make sure that your USB is connected to the computer and to the sign.

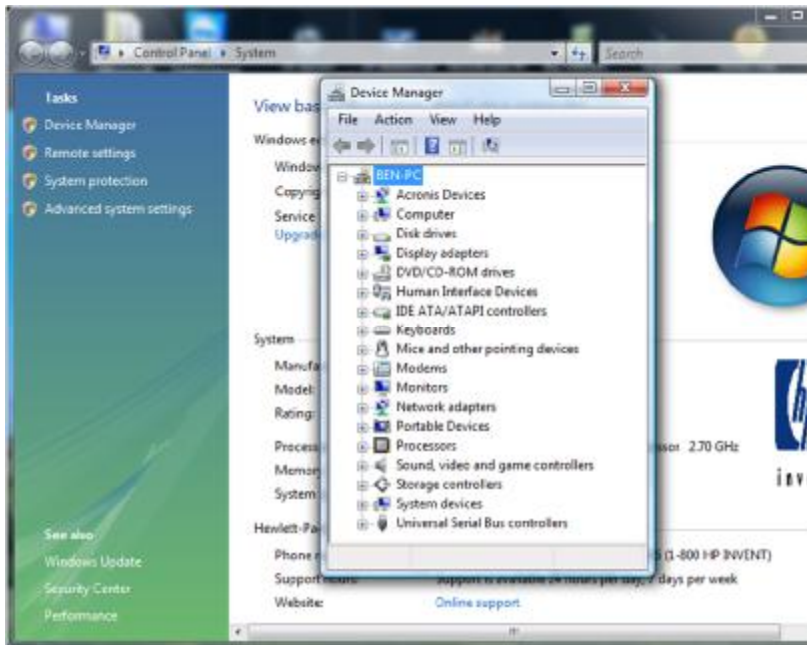
To check your Com Port please follow these steps: (The Next 15 Steps Are The Same For USB To Serial Cable **AND** Bluetooth Set Up).

1. Select & Press “Start” menu button on your computer.
2. Mouse Over “My Computer” & right click the mouse button.
3. Select & press the “Properties” option.



4. The System Properties window will open. Press the “Hardware” tab (window XP, Vista or window 7 you will see “Device Manager”).

5. Press the “Device Manager” button.

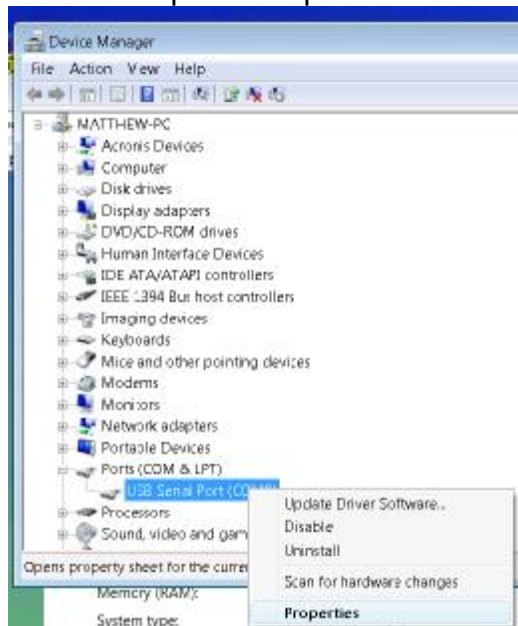


Windows Vista



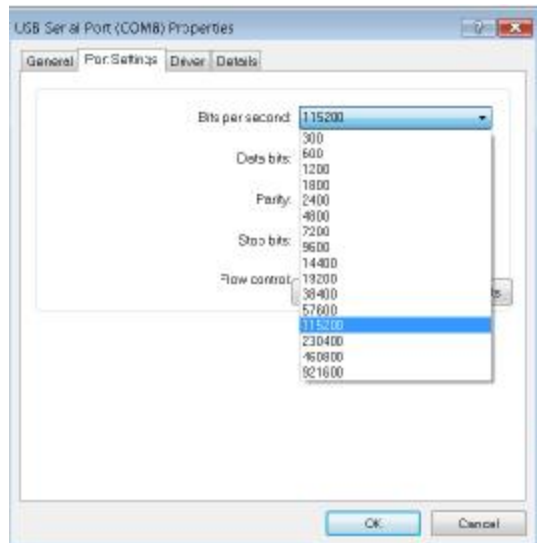
Windows XP

6. The Device Manager window will open. Locate the “Ports” section & press the “Plus Symbol” next to it. Your installed USB serial Port should be listed here.
7. Next, Right click your USB serial name within the list. Select & press the “Properties” option.

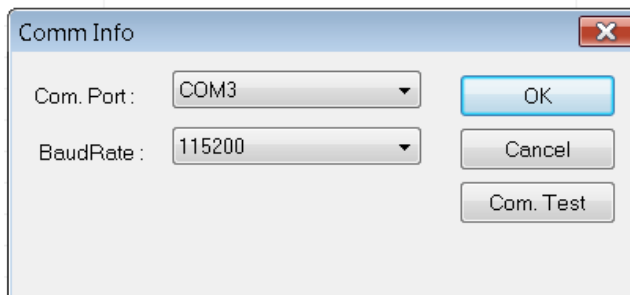


8. Port number, example (Port: **COM 3**), write it down for future reference.

9. The “Properties” window will open. Select the “port setting” Change (Bit Per Second) To **115200**



10. Press the “OK” button to complete the process. Close all other windows.
11. Start “SunNet Pro” program.
12. Go to “Board” menu & select the “Connect” option.
13. The Com Info window will open.
14. Select the correct “Com Port” option (example com3 or com which you previously made note of) & change the “Baud Rate” to 115200.



- 15 Click OK and now you are connected.

Bluetooth Setup

Insert Bluetooth In USB Port **AND** Insert The **CD** Provided For Bluetooth. **INSTALL** Driver for Bluetooth. After installation **RESTART** Your Computer. Now Follow The 15 steps noted in previous chapter. (USB serial cable connection), pages 5-7.

Master and Slave Bluetooth Setup

4.1 Start “SunNet Pro” program.

4.2 Click “Board”-”Com Option”

4.3 Change the “Device Select Method”. From “Normal” to “BM2001-1:N”

Important: if your master and slave signs connected by a cable from one to the other you will use the “Normal” option

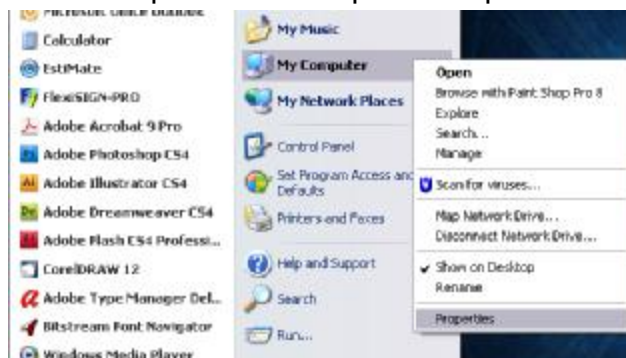


4.4 Press the “OK” button to complete the option change.

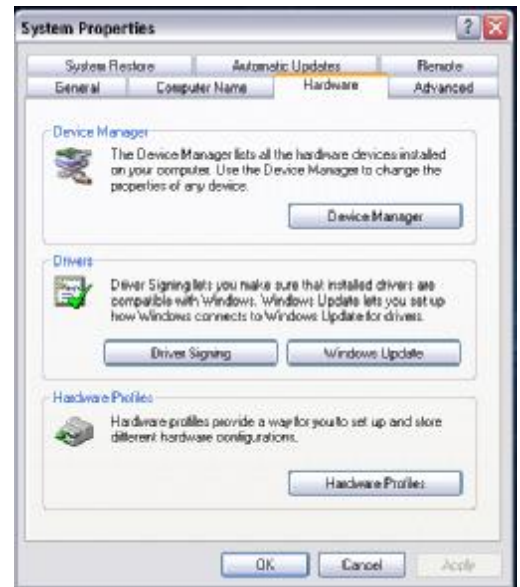
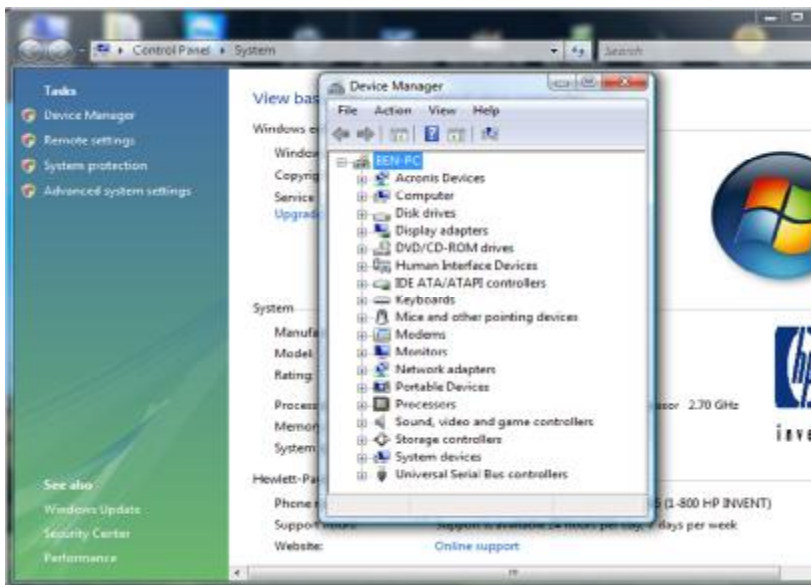
Modem Setup

To connect to your display(s) using a modem connection, make sure the display has a phone line wire connected to the signs internal modem device and wall jack. Then make sure that your computer modem is connected to the computer and wall jack.

1. Select & Press “Start” menu button on your computer.
2. Mouse Over “My Computer” & right click the mouse button.
3. Select & press the “Properties” option.

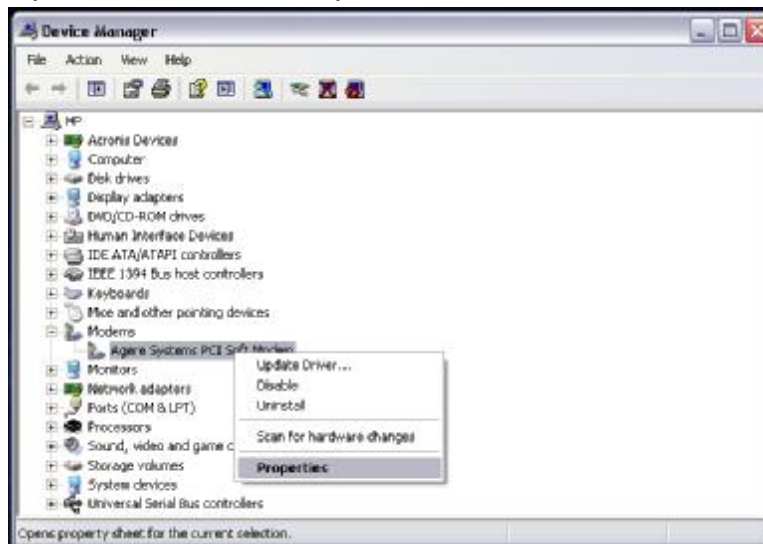


4. The System Properties window will open. Press the “Hardware” tab.
5. Click “Device Manager” button.



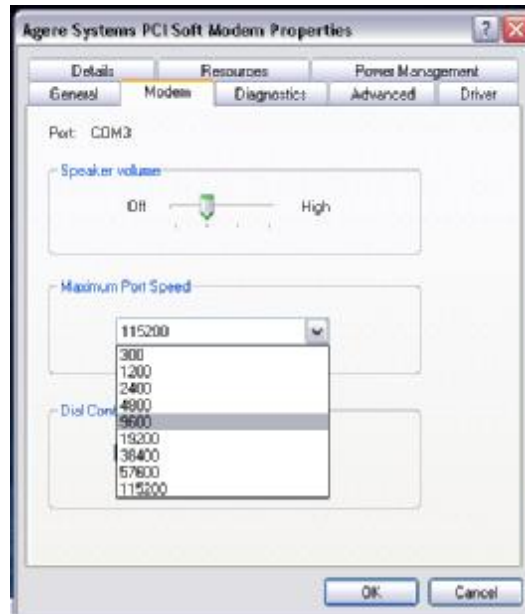
WINDOWS VISTA

6. The Device Manager window will open. Locate the modem section & press the “Plus Symbol” next to it. Your manufacture installed modem should be listed here.
7. Right click your modem name within the list. Select & press the “Properties” option.
8. The “Properties” window will open. Select the “Modem” tab. Look for

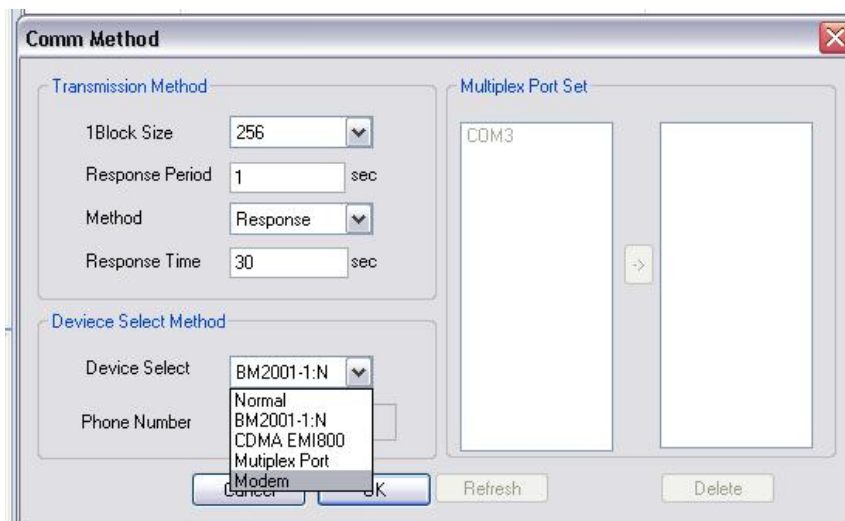


Com Port number, example (Port: COM 3), and write it down.

9. Change the “Maximum Port Speed” to **9600**(any other communication, like a serial cable, network or Bluetooth must be 115200)



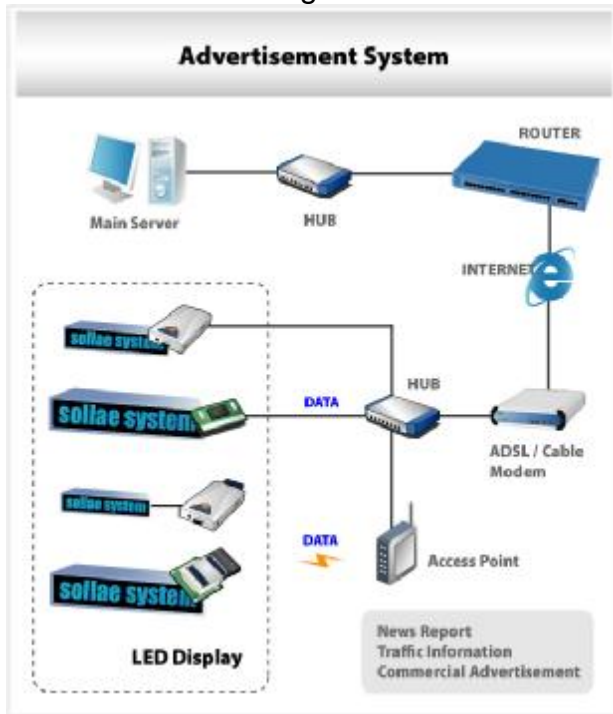
10. Press the “OK” button to complete the process. Close all other windows.
11. Start “SunNet Pro” program.
12. Click “Board”-”Com Option”.
13. Change the “1 Block Size” from **512** to **256**.
14. Change the “Response Time” from **15** to **30**.
13. Change the “Device Select Method”. From “Normal” to “Modem”



15. Press the “OK” button to complete the option change.
16. Go to “Set” menu & select the “Connect” option.
17. The Com Info window will open.
18. Select the correct “Com Port” option. &change the “Baud Rate” to 9600.
19. The process is complete.

Network Installation

Please follow the diagram below to ensure the correct connection:



ezVSP Configuration of IP Address

NOTE this section has already been setup by manufacturer. Changes are **not recommended, unless your IP changes.**

1. Click on ezConfig software
2. Connected to your network
3. Click on Search All
4. Find the Device and change the Network Information
5. Click on Write to overwrite the information on the Device.

**If this sign needs to be controlled outside of your network, enter "Gateway IP Address". Enter the same IP address with local port 1470 in your "Local Router" to access from internet.*

*Tip: Multiple signs should use a different port for each sign like 1471 for second sign**



Install ezVSP Software



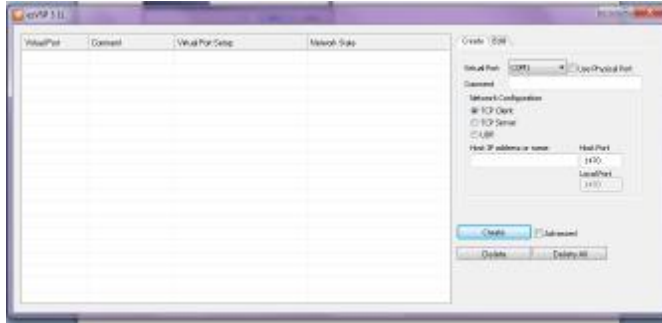
Use the MAC and KEY below for installation



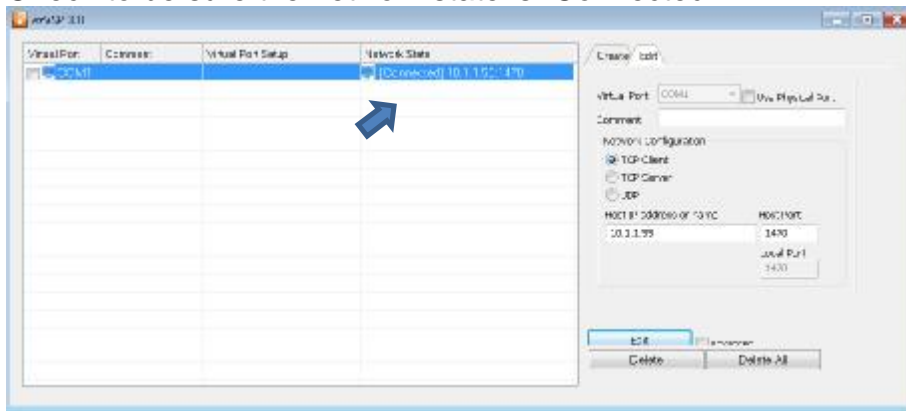
How to Connect to Sign with ezVSP Ethernet

Start ezVSP

Choose COM port and Enter IP address click "Create".



Check to be sure the network state is “Connected”.



How to Send Message to Sign

Start “SunNet Pro” program and createa scenario.
Click “Board”-”Connect” and set the same COM Port as ezVSP

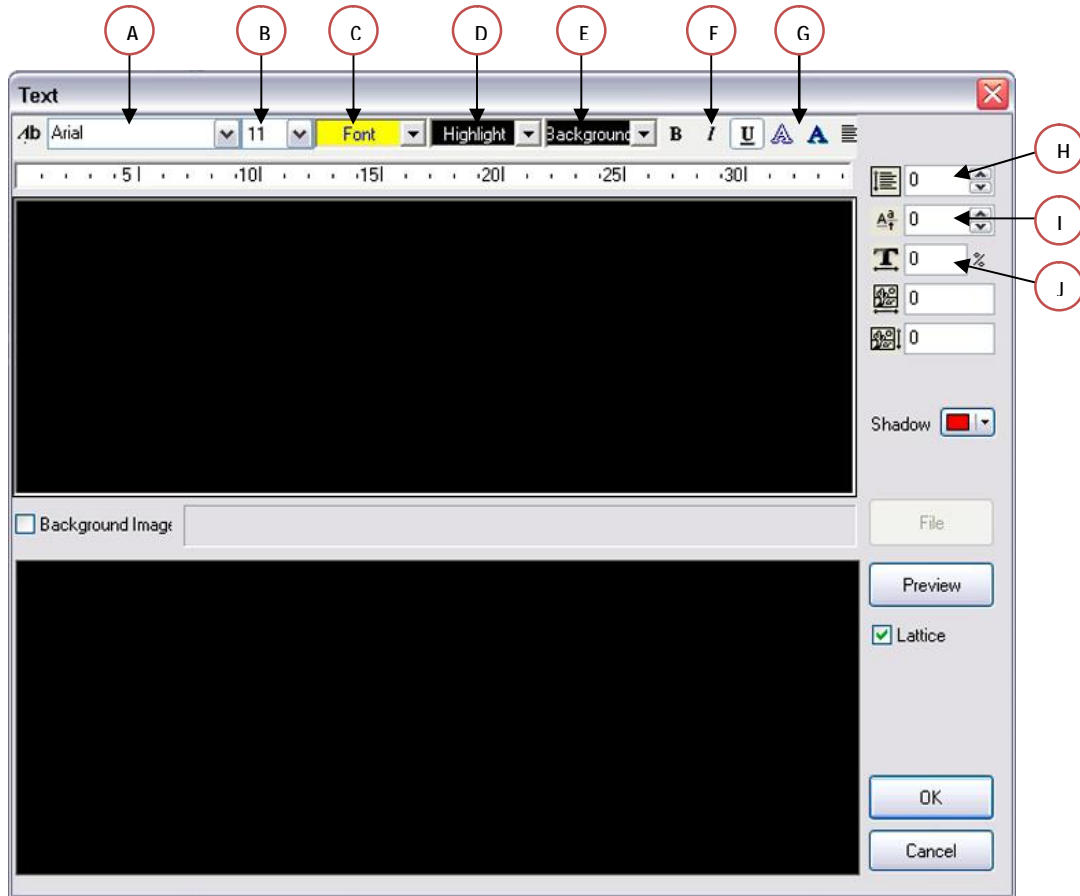


Next, click “send” or “Board”-”Transmit”-”Scenario”.
You can see the Message to the remote sign.

How to Input Text



5.1 Click “Insert” -> “Text” in menu or on tool bar. **Text** The text window shown in the example below will pop up. Fonts, text size, font color, highlight & background color can be set using upper line tool bar.



A.) Font Name: Selection of available fonts on your computer system.

Recommend Fonts Are. Terminal-#7 Tahoma-#7 Corbel-#7 Arial- #7

Use Terminal Font For Multi Line Text (size 7 Or 8)

B.) Font Size: Selection of different font sizes for your message.

C.) Font Color: Selection of a desired color for your font.

D.) Highlight Color: Selection of a desired color for your highlighted font

E.) Background Color: Select a desired color for your message background

F.) Font Characteristics: Choose these options for adding common characteristic to your selected message item.


B – Bolds the selected character(s) in the message

I – Italicize the selected character(s) in the message


U – Underlines the selected character(s) in the message

G.)  – Creates a outline the selected character(s) in the message

 – Creates a shadow of the selected character(s) in the message

H.)  – Increase or Decrease the sentence spacing

I.)  – Moves the selected letter up or down

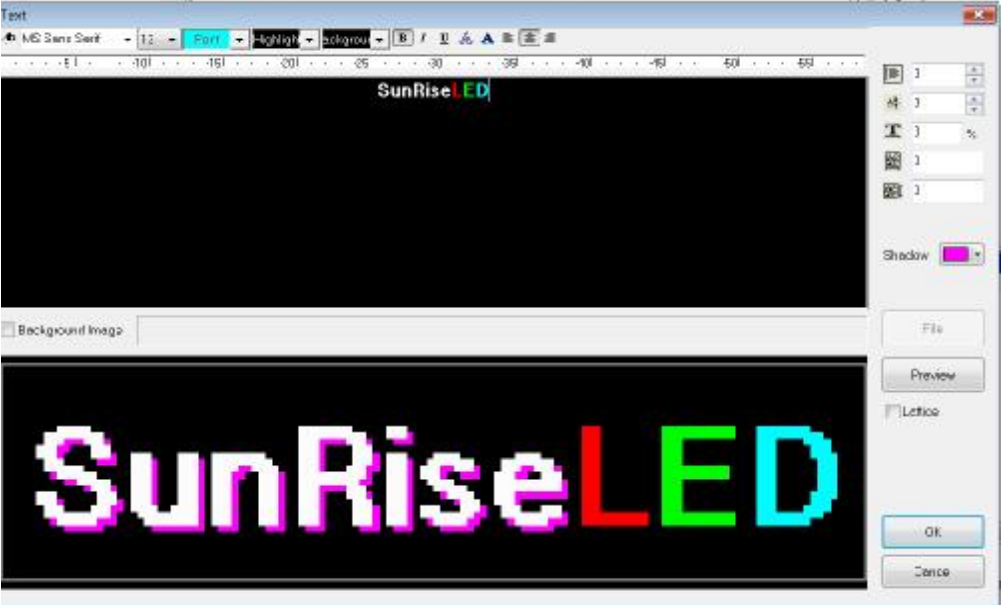
J.)  – Increase or Decrease the width of the selected letters or words

5.2 Font height, position can be set using the tool bar located on right.

5.3 "Background Image" can be inserted by checking

Background Image (Choose an image that is approximately the same size as your screen size)

5.4 Once you've finished writing and editing, click OK button.



5.5 The text will be listed on "content list"



5.6 It's time to insert action item/effect. Select your action Group. (RED Dots) Then Double click "Action Item" (GREEN Dots) which is classified by "action group"

5.7 Input "Wait Time" (how long you want the message to appear on the screen) by clicking "Insert"->"Wait Time" in menu or on tool bar - Wait time: 1ms(1,000ms=1 sec), 1sec, 1min

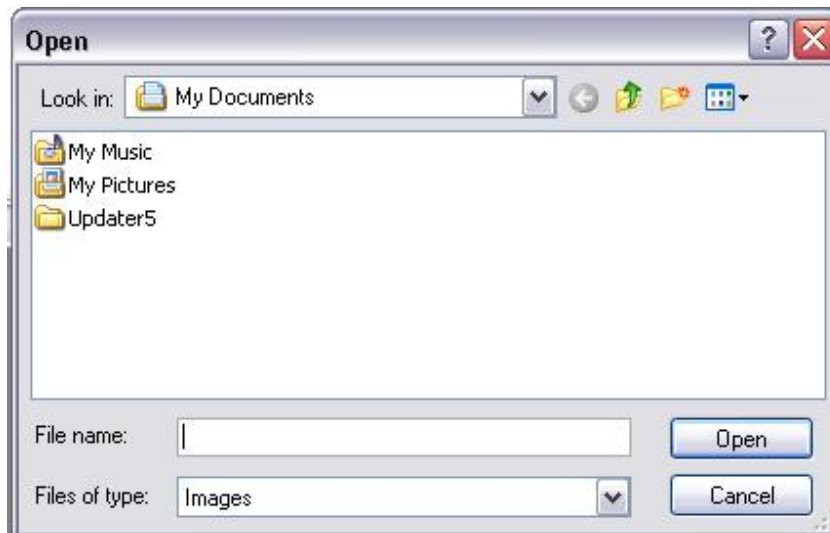


5.8 Messages that you create will be listed on “contents list”. Click Play button on tool bar for preview. For correction of contents, double click the content in “content list”. The connected window will pop up.



How to Input an Image

6.1 Click “Insert”-”File Image” in menu. Image window pops up. pg, gif & bmp files are available. The image file should not be larger than 600 x 400 pixels, otherwise the image will not be seen. Reduce the size using “Photoshop” or “Paint pad”.



How to Make a Scale Image Scenario



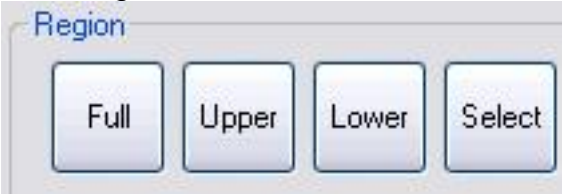
7.1 Choose "Insert"- "Image Action" in menu or on tool bar and import an image. (If the Image size is smaller than 600 x 400 pixels)

7.2 Drag white box to re-size. The computer will save the scenes as viewed in the white box. Next set the duration. After saving this action image, you can see the scenes. Click the "Play" icon. (Repeat the procedure to re-size additional times).

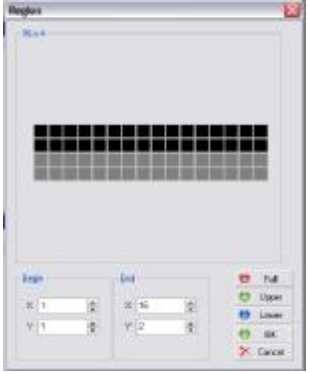


How to Set Region

8.1 This function makes one sign board use two or more virtual screens. Click "Insert" -> "Region" or below tool bar.



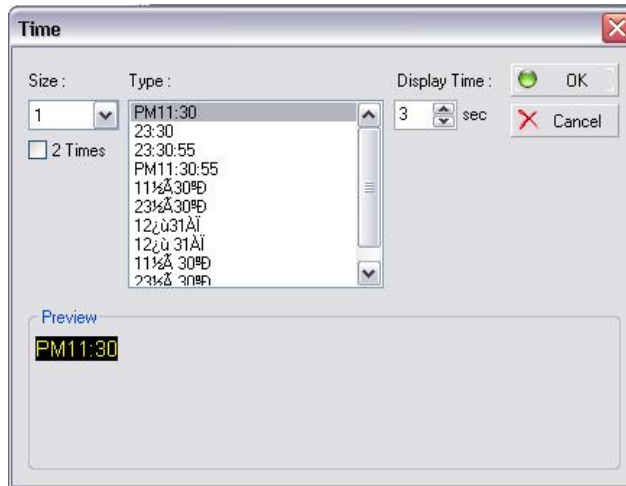
8.2 You can see below window. If you select upper 2 lines first, you can make various contents (text, pictures.) display on upper 2 line until you select a new region.



8.3 For example, if you select upper 2 line and input time content, the time will be displayed only on upper 2 lines and different message on lower lines.

How to Input Time, Date & Temp

- 9.1 Click “insert”->”Time & date”. There are various time/date formats, size & display time from which to choose.

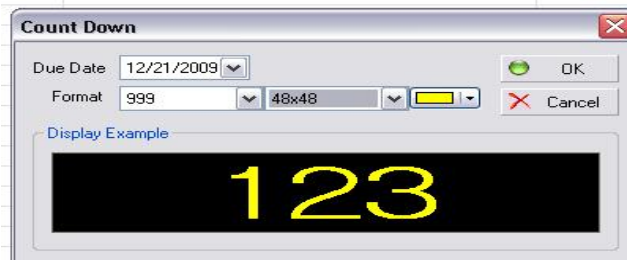


- 9.2 Click “insert”->”OutInfo”. Font size and temperature format (Celsius or Fahrenheit) can be selected. (In order to use this function, temperature probe must be attached to sign board.)



How to Input a Count Down

- 10.1 Click “insert” -> “Count Down”. Press the down arrow button next to the date area. Choose your desire date to count down to, also known as the due date. Next, choose the display format. First, you will choose the character look. Next, is to choose the size of the characters. Finally, choose your color for the Count Down. After completing those steps, press the “OK” button to input the message into the Content Area section.



How to Input a Video

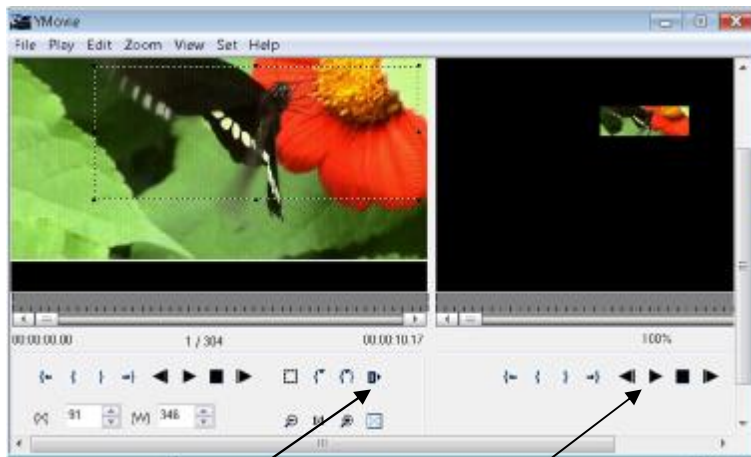
10.1 Click "Insert"->"Movie" or on tool bar.



The window below will be displayed.




10.2 Click "Video Editor". This is video editor's main window.



- Click "Set" -> "Export format" and set screen size of signboard.
- Click "File"->"Import" to open source file (video file). *Left window is for source file and right window is for clipped/captured video.*

- White line box shows the area of capturing area from source file. You drag the points to adjust section of the video you wish to capture. *(Preview will be shown on right window)*

- Click  add clip button in order to start capture.
- Click on Play button on right window to see what you captured/clipped video.
- Click "File"->"Export" to save the captured file. And exit the video editor.

10.3

- Select "YMV File" and choose the video file (YMV file) you saved. "Loop count" can be set here.



10.4 Source and captured file can be edited by video editor.

How to use Day-Counter(Non-disaster)

Auto Day counter is available by using “Non-Disaster” menu.

11.1 Connect sign to your pc.

11.2 Click “Set”->”Non-Disaster”. (We need to set “non-disaster” function first)



-Method: Day and hour can be counted.

-Target: Target day or hour can be set.

-Achieve: Achieved day or time can be set.

-Times: Increasing unit can be set. (If you set 2, 2 days per one day will be counted)

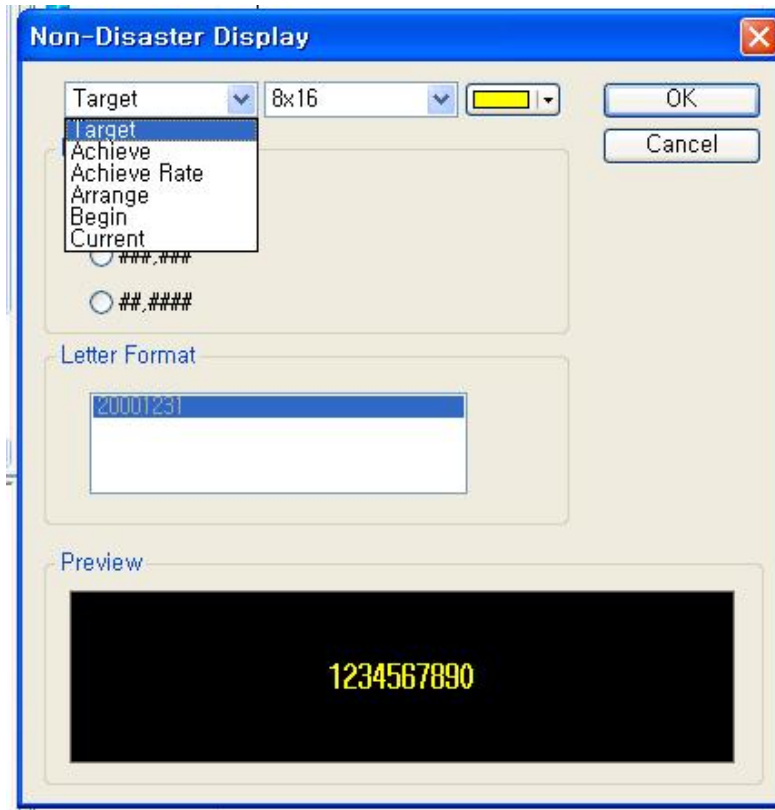
-Arrange: The final day or time.(D-day/D-time)

-Begin: Starting day or time.

11.3 For example, if we want to display: “No accidents from 9/1/08 to today (9/5/08) and target day is 9/30/08, you need to set the dates as shown in the example above.

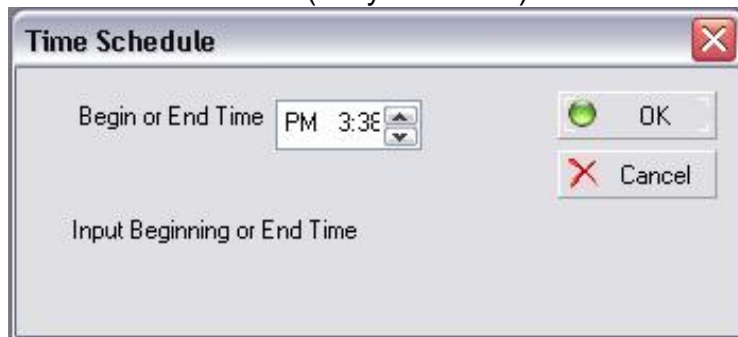
11.4 Click “send” button and “OK” button in order.

11.5 Click “Insert”-“Non-disaster” and choose content you want to display. This content needs an action item to be displayed just as used in other content.



How to Make a Schedule

11.1 Time schedule (daily schedule)



- Click “Insert” -> “Schedule” -> “Time Schedule”.
- Set the time when the contents will be activated. This setting affects the items beneath it in the contents list.
- Set the time when the contents are not activated by clicking the same window. Next set the time when you want the contents to be deactivated.

11.2 Date schedule



- Click "Insert" -> "Schedule" -> "Date Schedule".
- Set the date when all the contents will be activated. This setting affectthe items beneath it in the contents list.
- Set the date when the contents are not activated. Then set the time when you want the contents to be deactivated.

How to Send File to Sign

12.1 Click "Board"-> "Connect". You may have to set com port first.



12.2 Click "Board"-> "Transmit"-> "Scenario". Transmit window pops up. Or Just Click "Send" button to send file to sign board.

- Tip: How to synchronize computer time and sign's time.
- Click "Board"->"Transmit"->"Time Update"